



SHRITECH ENERGY

# COMPANY PROFILE

[www.shritechenergy.com.sg](http://www.shritechenergy.com.sg)



# Table of Content

---

-  ABOUT COMPANY
-  VISION / MISSION
-  OUR TEAM
-  OUR SERVICE
-  CONTACT



# About Company

---

PT Shritech Energy Indonesia is a leading provider of CNC Machining, Onsite Machining, and Steel Fabrication services. With over 25 years of global experience through our Singapore parent company, we deliver precision engineering solutions for the Oil & Gas, Marine, Mining, Renewable Energy, Aerospace, Food, and Pharmaceutical industries.

Our state-of-the-art workshop in Batam, Indonesia is equipped with advanced CNC machines, heavy-duty fabrication facilities, and stringent quality control systems, enabling us to deliver reliable, high-precision components and assemblies.





# Our Presence





# Mission

---

We combine world-class technology, skilled expertise, and a relentless commitment to quality and safety to serve industries that keep the world moving. We deliver high-precision machining, fabrication, and onsite solutions that reduce downtime, maximize efficiency, and empower our clients to succeed in competitive global markets.

# Vision

---

To redefine the future of machining and fabrication by delivering world-class solutions that power global industries with precision and reliability.



## Our Value



# **PT Shritech Energy - Indonesia**





# Certifications



25, 9:54 AM

Amtivo Certificate



## CERTIFICATE OF REGISTRATION

The management system of certificate number 628981

**PT SHRITECH ENERGY INDONESIA**  
Executive Industrial Blok B2 No 1&2, Jl. Engku Putri, Belian, Batam Kota, Kota Batam, Kepulauan Riau, 29464, Indonesia

has been assessed and certified as meeting the requirements of:

**ISO 45001:2018**

Provision of Precision Machining Services for Oil & Gas and Marine Industries within Asia Pacific Region

Further clarifications regarding the scope of this certificate and the applicability of requirements may be obtained by consulting the certifier.



Valid from:  
Initial certification: 18 December 2024  
Latest issue: 18 December 2024  
Expiry date: 17 December 2027  
Subject to annual assessments.

Authorised by

Mike Tims  
Chief Executive Officer



[british-assessment.co.uk](http://british-assessment.co.uk)

Certificate issued by Amtivo Group Limited T/A British Assessment Bureau Ltd.  
Certification is conditional on maintaining the required performance standards throughout the certified period of registration.  
Amtivo Group Limited, 30 Tower View, Kings Hill, Kent, ME19 4UY.

\*/connect2.amtivo.com/cert/amtivo-cert10002.asp?c=628981&v=x91021b8h9e5&e=68715

25, 9:49 AM

Amtivo Certificate



## CERTIFICATE OF REGISTRATION

The management system of certificate number 625941

**PT SHRITECH ENERGY INDONESIA**  
Executive Industrial Blok B2 No 1&2, Jl. Engku Putri, Belian, Batam Kota, Kota Batam, Kepulauan Riau, Indonesia 29464, Indonesia

has been assessed and certified as meeting the requirements of:

**ISO 9001:2015**

Provision of Precision Machining Services for Oil & Gas and Marine Industries within Asia Pacific Region

Further clarifications regarding the scope of this certificate and the applicability of requirements may be obtained by consulting the certifier.



Valid from:  
Initial certification: 14 September 2023  
Latest issue: 24 September 2024  
Expiry date: 13 September 2026  
Subject to annual assessments.

Authorised by

Mike Tims  
Chief Executive Officer



[british-assessment.co.uk](http://british-assessment.co.uk)

Certificate issued by Amtivo Group Limited T/A British Assessment Bureau Ltd.  
Certification is conditional on maintaining the required performance standards throughout the certified period of registration.  
Amtivo Group Limited, 30 Tower View, Kings Hill, Kent, ME19 4UY.

25, 9:49 AM

Amtivo Certificate



## CERTIFICATE OF REGISTRATION

The management system of certificate number 628980

**PT SHRITECH ENERGY INDONESIA**  
Executive Industrial Blok B2 No 1&2, Jl. Engku Putri, Belian, Batam Kota, Kota Batam, Kepulauan Riau, Indonesia 29464, Indonesia

has been assessed and certified as meeting the requirements of:

**ISO 14001:2015**

Provision of Precision Machining Services and Fabrication works for Oil & Gas and Marine Industries

Further clarifications regarding the scope of this certificate and the applicability of requirements may be obtained by consulting the certifier.



Valid from:  
Initial certification: 18 December 2024  
Latest issue: 18 December 2024  
Expiry date: 17 December 2027  
Subject to annual assessments.

Authorised by

Mike Tims  
Chief Executive Officer



[british-assessment.co.uk](http://british-assessment.co.uk)

Certificate issued by Amtivo Group Limited T/A British Assessment Bureau Ltd.  
Certification is conditional on maintaining the required performance standards throughout the certified period of registration.  
Amtivo Group Limited, 30 Tower View, Kings Hill, Kent, ME19 4UY.

\*/connect2.amtivo.com/cert/amtivo-cert10002.asp?c=628980&v=jqg87c3n24&e=68431



# QHSE Policy

SHRITECH ENERGY

## Quality, Health & Safety, Environment Policy

At PT Shritech Energy Indonesia, we are committed to achieving total customer satisfaction through the delivery of high-quality products and services, while ensuring a safe, healthy, and environmentally responsible workplace for all employees and stakeholders.

We pledge to:

- Protect People and the Environment: Prevent injury, illness, and pollution through proactive risk management, safe work practices, and sustainable use of resources.
- Comply with Regulations: Meet or exceed all relevant statutory, regulatory, and customer requirements related to Quality, Health, Safety, and Environment.
- Promote a Safety Culture: Foster awareness, competence, and accountability at every level through continuous training, employee empowerment, and management leadership.
- Drive Continuous Improvement: Enhance QHSE performance by implementing measurable objectives, reviewing processes, and embracing innovation and best practices.
- Engage and Collaborate: Maintain transparent communication and cooperation with our employees, customers, suppliers, and regulatory bodies to uphold the highest standards of QHSE excellence.
- This policy serves as a framework for setting and reviewing QHSE objectives and will be periodically reviewed to ensure its continuing suitability, adequacy, and effectiveness.
- Together, we strive for excellence in Quality, Safety, and Environmental Stewardship – for today and the future.
- Batam,

Senthilkumar Kalimuthu  
Director



[www.shritechenergy.com.sg](http://www.shritechenergy.com.sg)





# Director's Message

At PT Shritech Energy Indonesia, we believe precision is not just a requirement—it is a promise.

CNC machining is at the heart of modern engineering, and every component we manufacture carries with it a commitment to accuracy, durability, and innovation. In today's fast-paced industries, the difference between success and setback often lies in microns. That is why we continuously invest in advanced CNC technology, skilled craftsmanship, and a culture of continuous improvement. Our machines may cut, drill, and shape metals, but it is our people—the engineers, operators, and innovators—who transform ideas into reality.

We are not just producing parts; we are creating solutions that power oil & gas, marine, mining, aerospace, renewable energy, and beyond. Each project is a testament to our belief that with the right mindset, discipline, and technology, challenges become opportunities.

To our clients, we promise more than quality—we promise partnership, reliability, and a shared vision for progress. Together, we machine the future.

Senthil Kumar  
Director, PT Shritech Energy Indonesia

[www.shritechenergy.com.sg](http://www.shritechenergy.com.sg)



*Senthil Kumar*



# Our Team

---



**KARTHICK  
GANESH**

—  
Sales &  
Operations



**THOMSON  
SAGITARIO.S**

—  
Production



**HENDRA  
WAHYU  
MUKTI**

—  
Quality  
Control



# Our Team

---



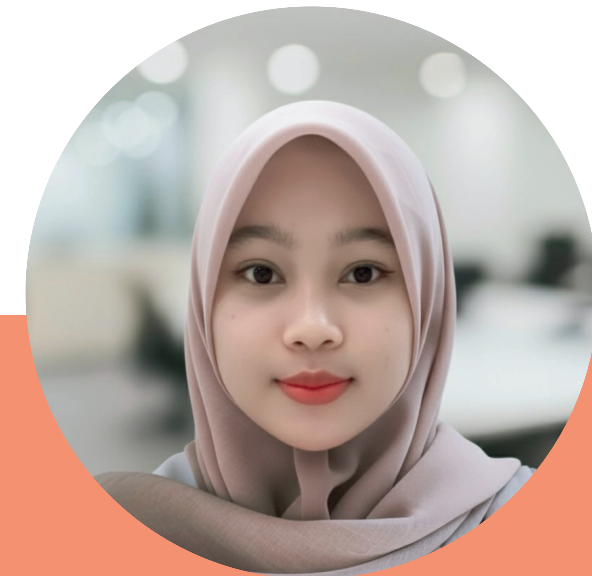
**JENILDA  
MELYANA  
SUSANTI**

—  
Document  
Specialist



**TASYA  
ALFITRA**

—  
Finance &  
Accounts



**IKKE  
NURJANNAH**

—  
Logistics &  
Purchase



# Our Team

---



**DEWI  
INDRIANI**

—  
Human Resource



**ACHMAD  
ZAENURI**

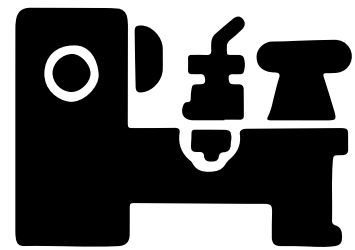
—  
Operations



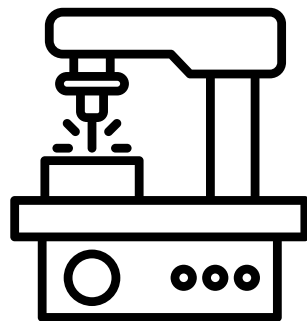
**ARNOLD  
RONNY  
TOBING**

—  
Operations

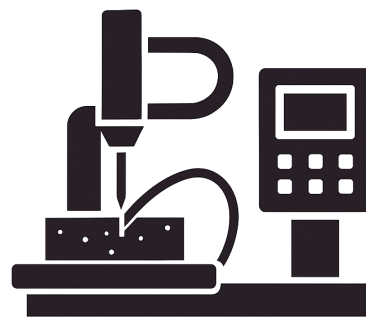
**Our Services**



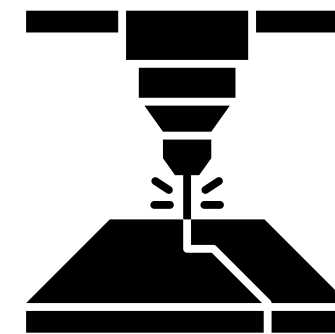
**CNC MACHINING**  
MILLING & TURNING



**SURFACE GRINDING**



**WIRE-CUTTING (EDM)**



**LASER CUTTING & BENDING**



**ONSITE MACHINING & SERVICING**

# Industries we serve





# Our Machining Facilities

# Turning



## Horizontal Lathe

# Turning



# Turning





# Hatford DOUBLE COLUMN MILLING

# Milling

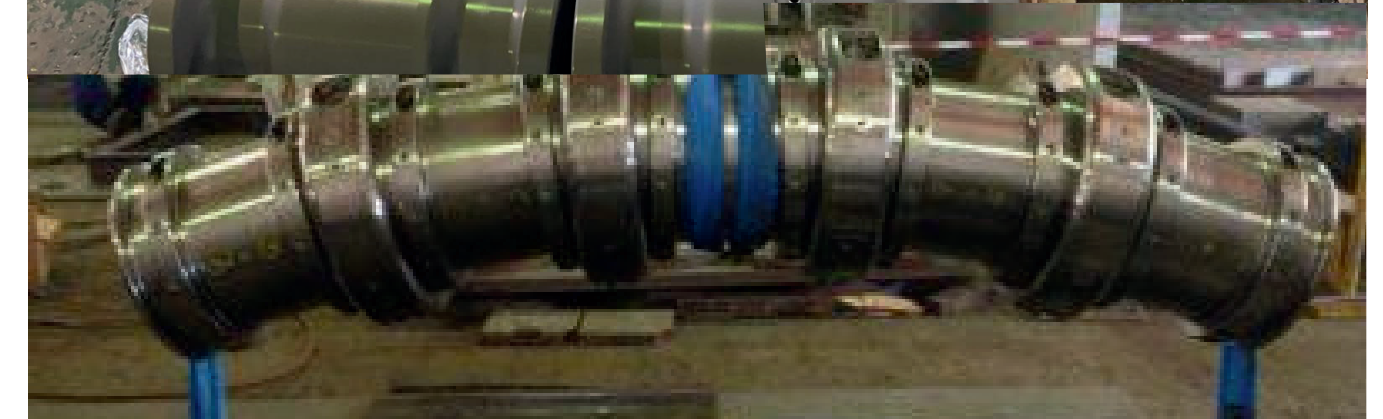




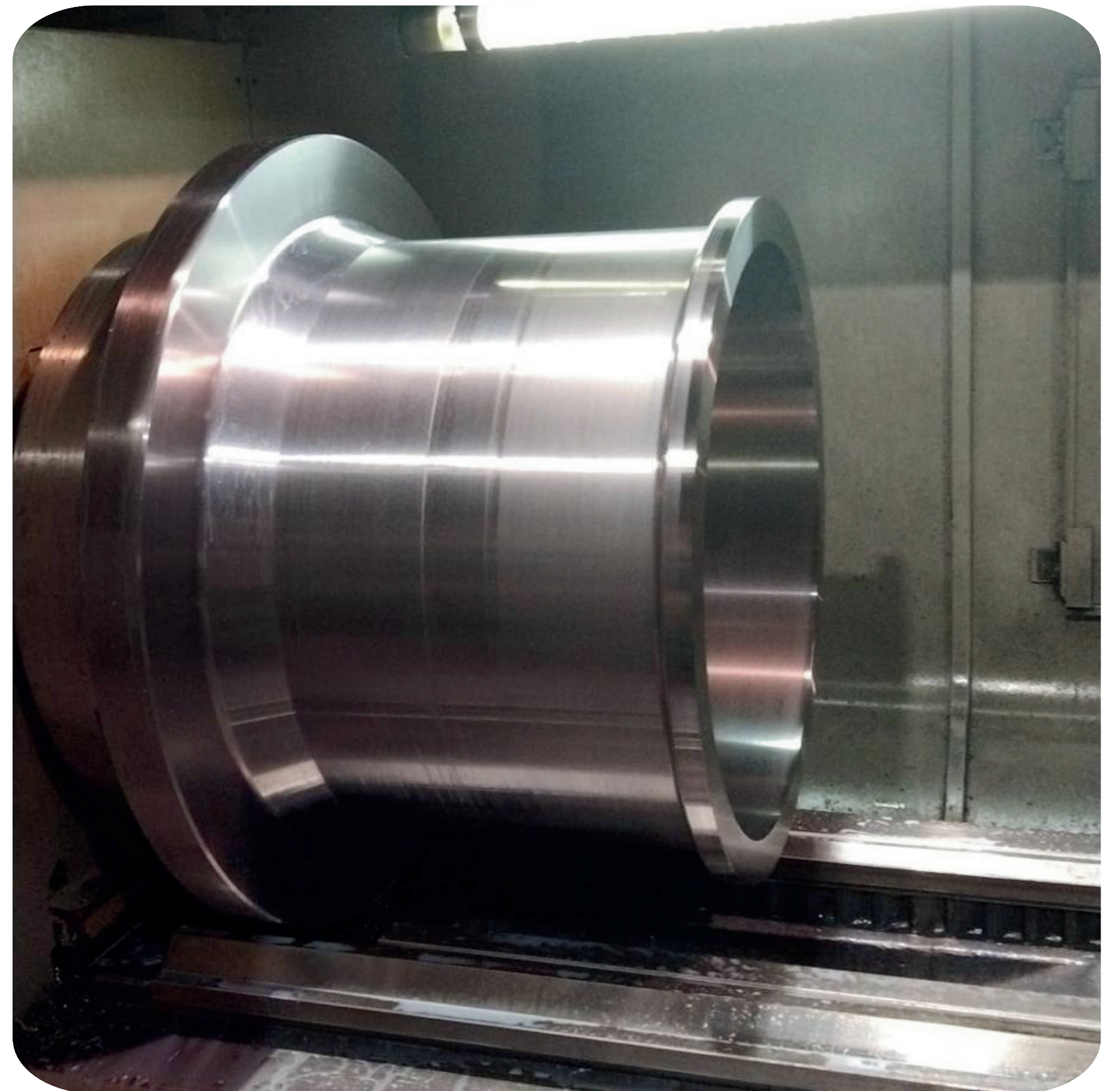
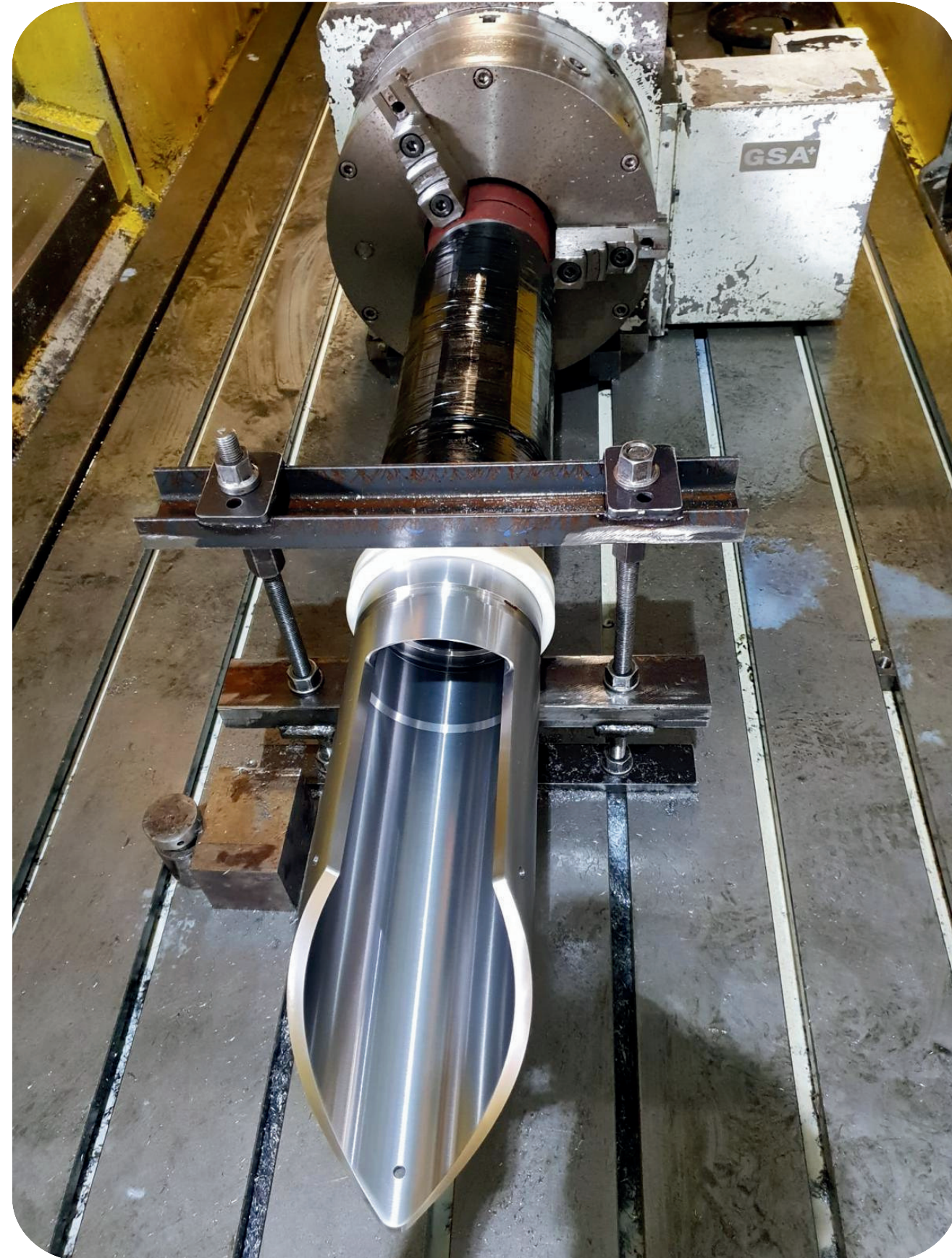
## Other Machines

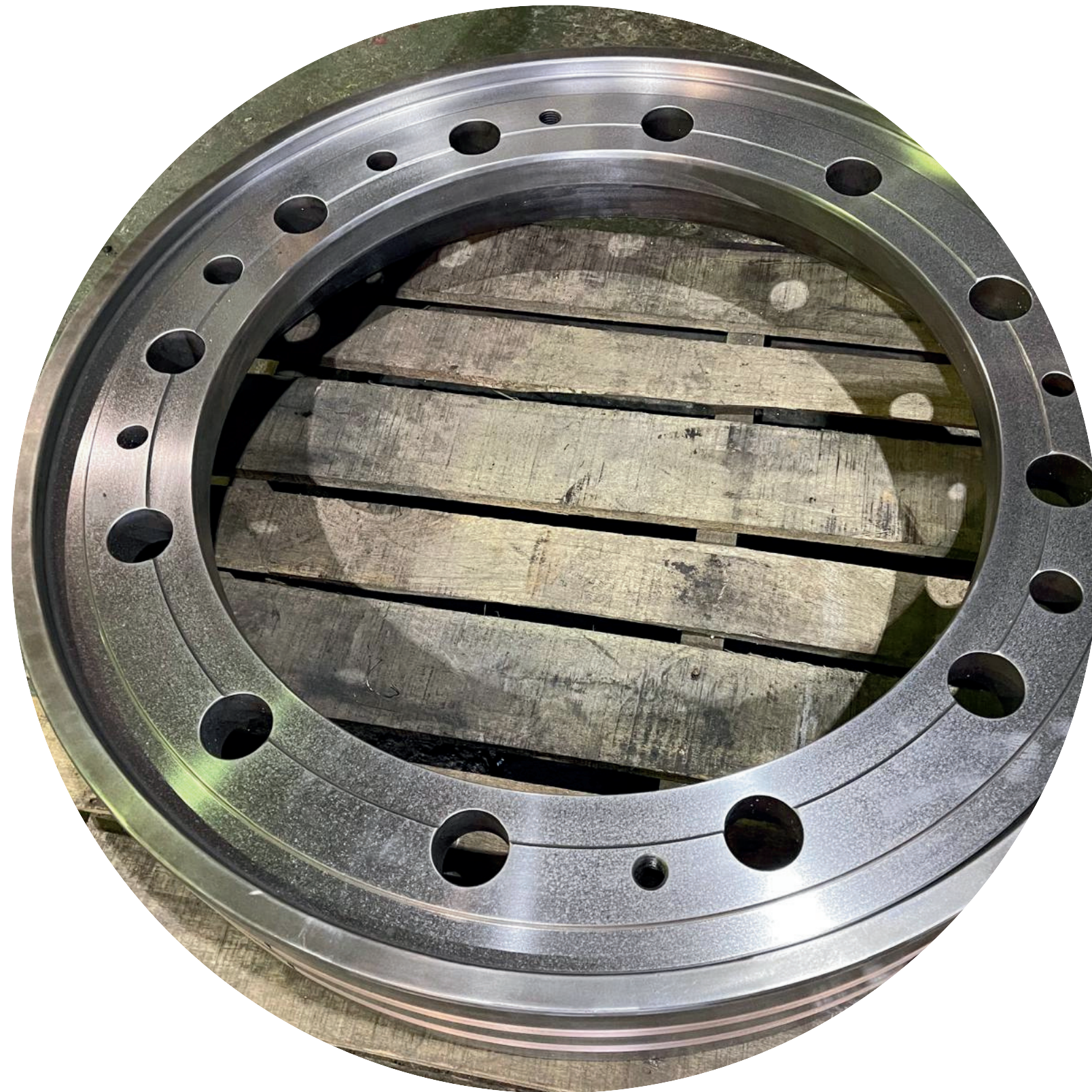


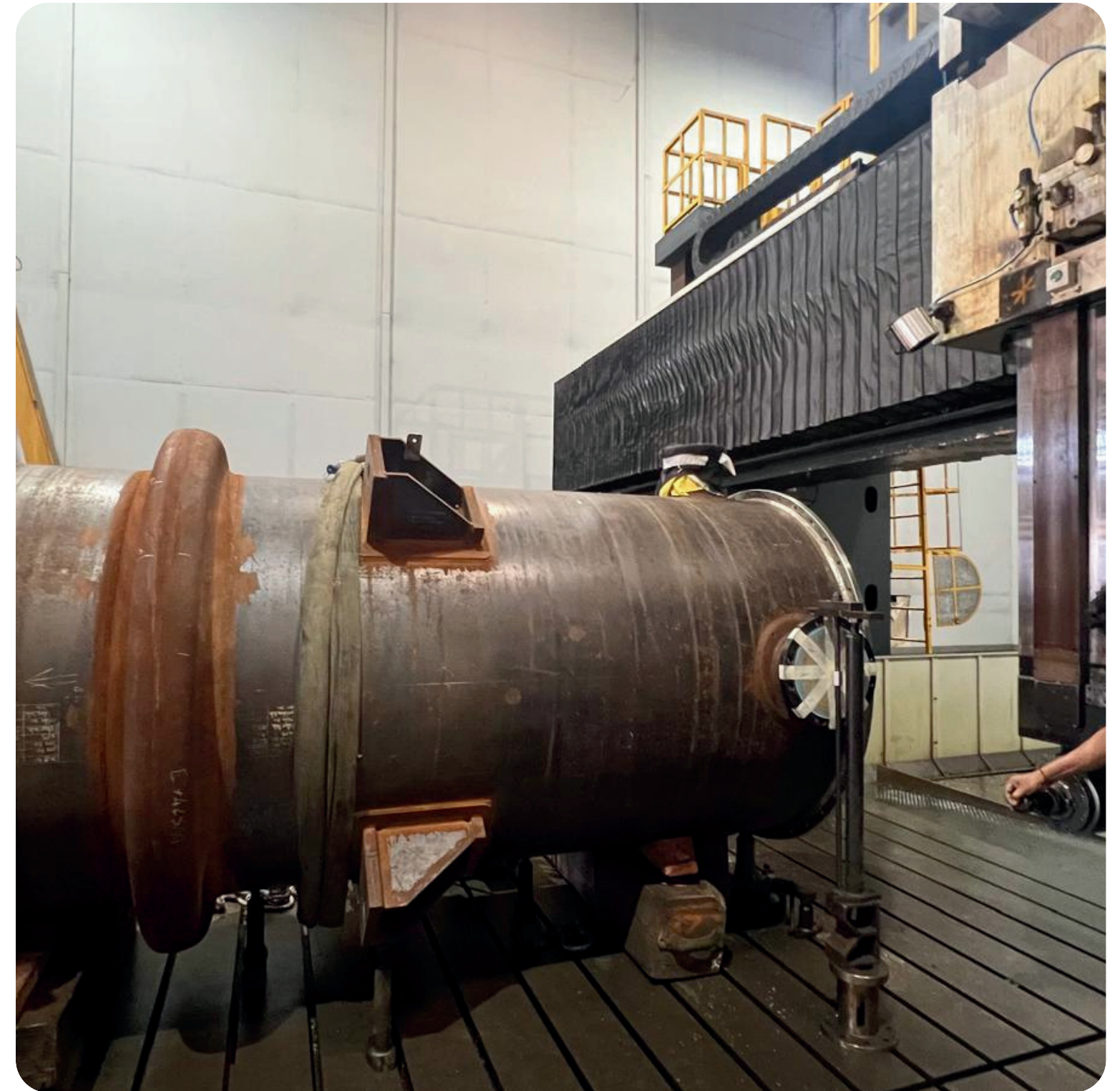
# Machining Capabilities

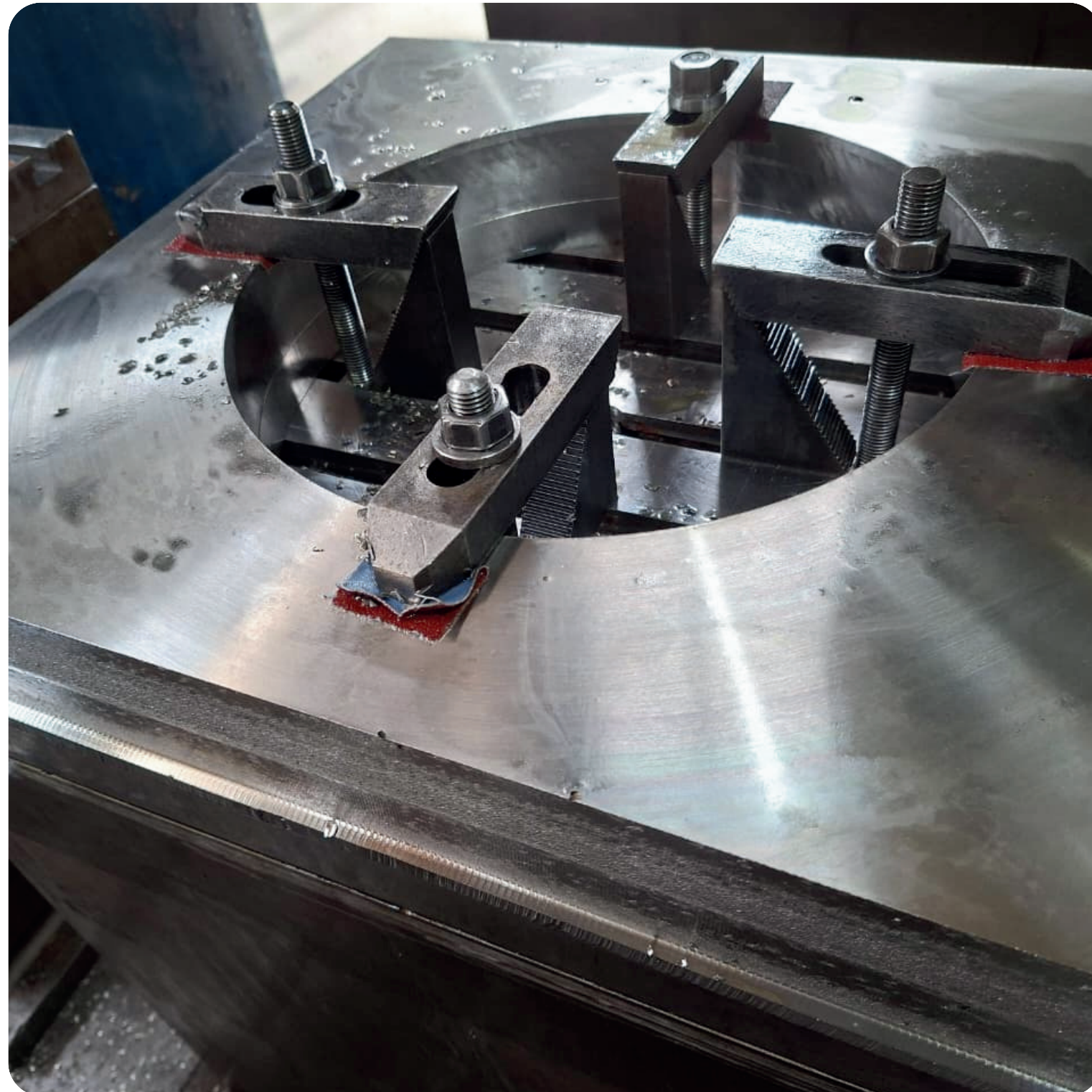


# Steel Bend Restrictors















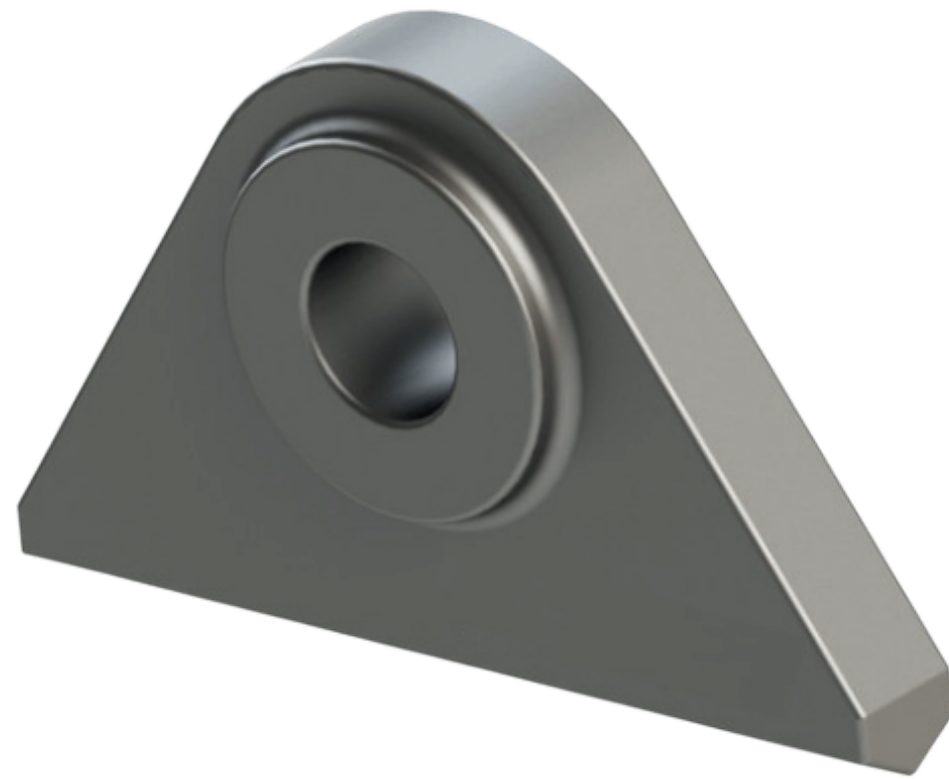
## WOODEN PATTERNS











**Padeye**



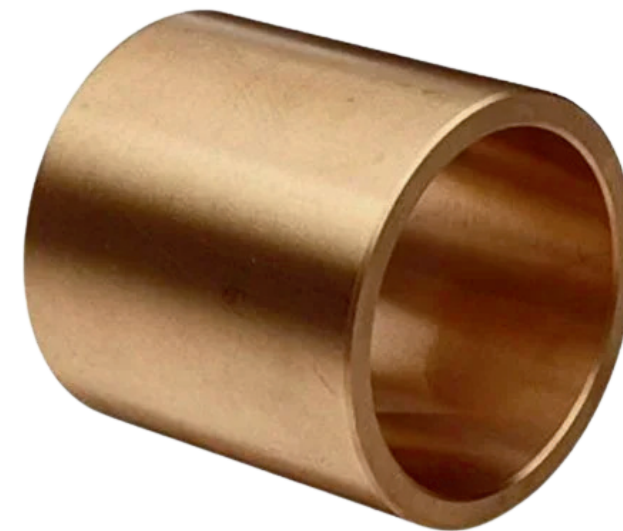
**Levelling Jack**



**Coupling**



**Machined Metal  
Component**



**Customized  
Bronze Bush**



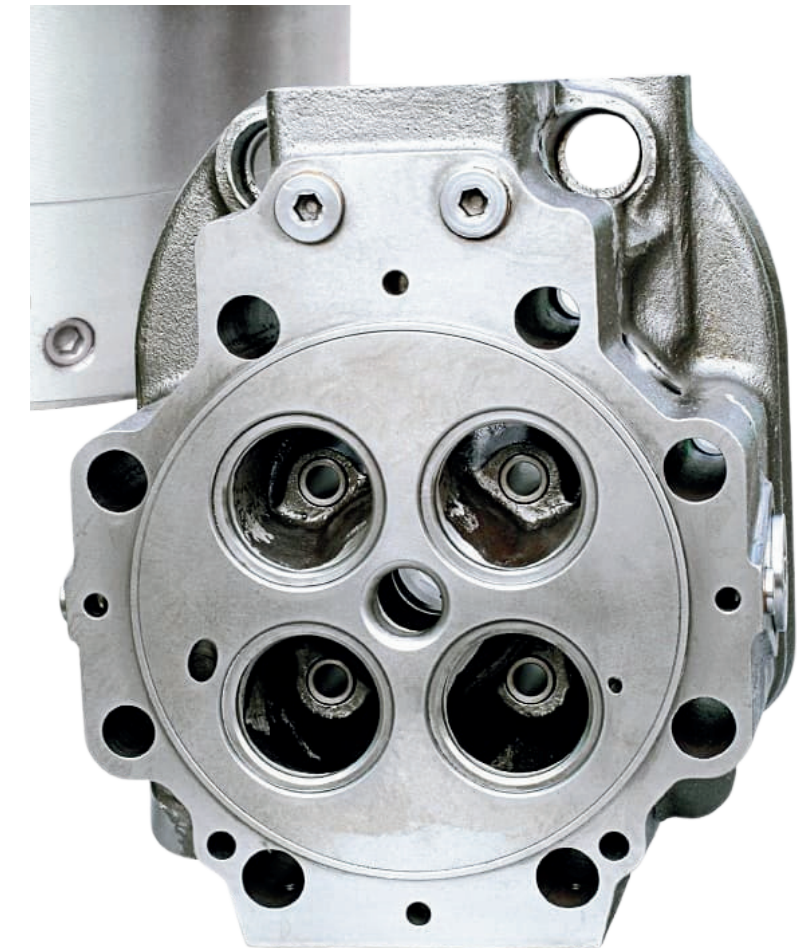
**Connecting Rod**



**Bearing  
Housing**



**Customized  
Machine Parts**



**Marine Engine  
Cylinder head**



## Customized Machine Parts

## Best Practices



Daily Morning Briefing

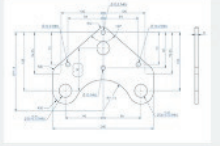
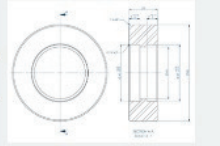
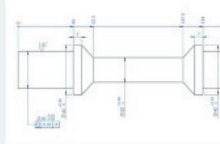
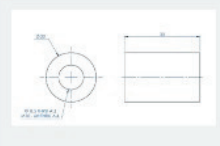
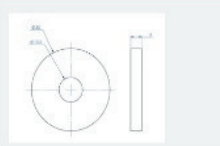
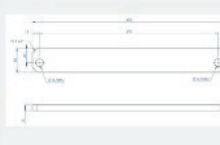
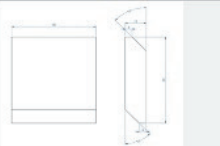
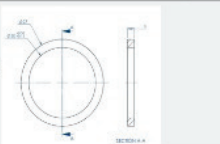


Designated Areas for QC & Raw Materials

# Best Practices


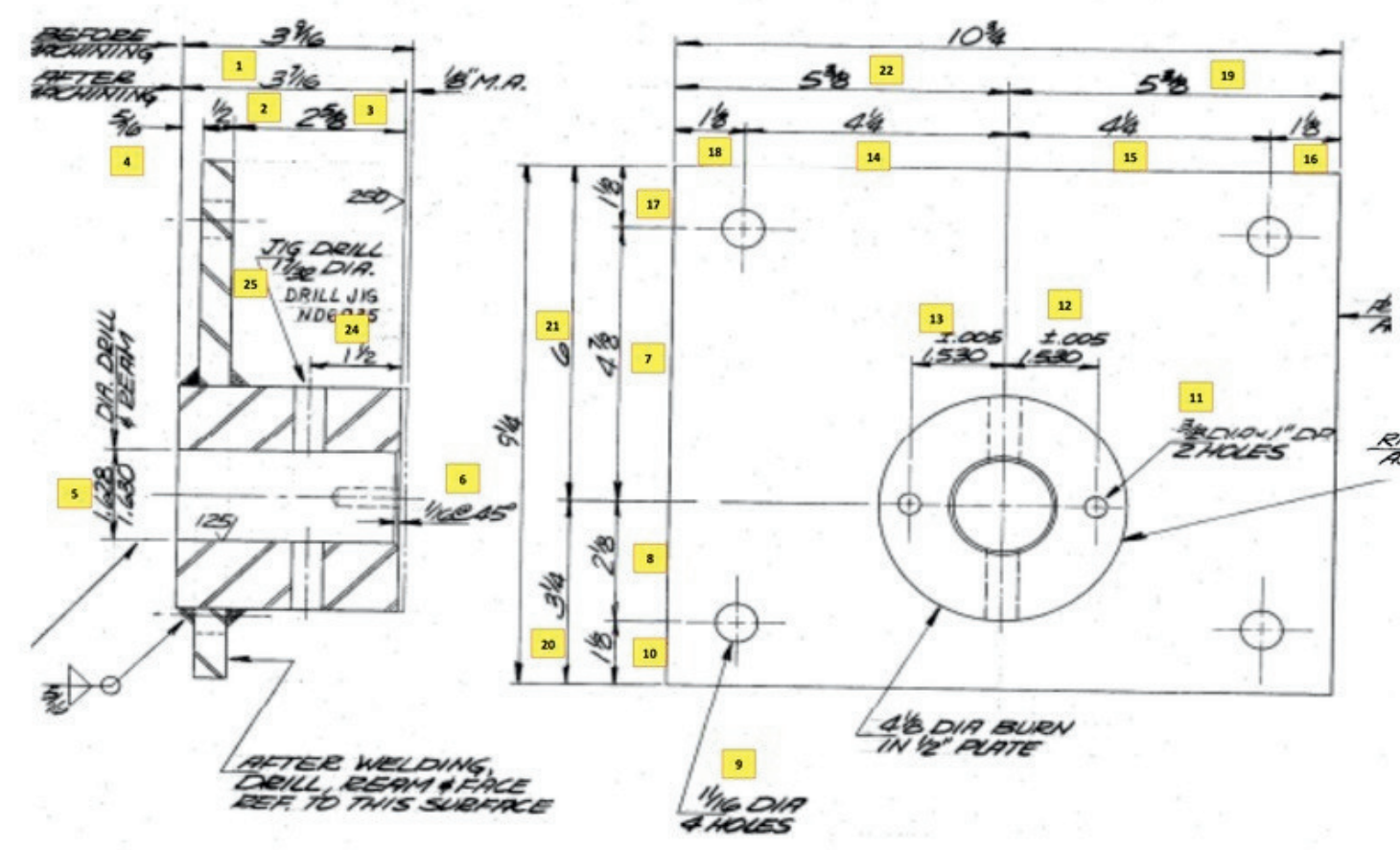


Pre Production Meeting

PO Number	Job Number/Part No	Item	DWG	PO to ShTech	QTY RECEIVED	BALANCE QTY TO RECEIVE	STATUS PROGRESS	STATUS PROGRESS (%)	PLAN Partial Delivery	DUE DATE	DELIVERED	CUSTOMER
10045623	PTST-I-25154	FABRICATION MAIN BASE PLATE, DWG NO 31013-5104, PLAIN CARBON STEEL		125	125	0	on Progress	100	29-Sep	9-Oct	9-Oct	CLADTEK
	PTST-I-25154	FABRICATION WHEEL, DWG NO 31013-5105, PLAIN CARBON STEEL		100	100	0	on Progress	100	29-Sep	9-Oct	9-Oct	CLADTEK
	PTST-I-25154	FABRICATION HOLDER PLATE, DWG NO 31013-5106, PLAIN CARBON STEEL		75	75	0	on Progress	20	29-Sep	9-Oct	9-Oct	CLADTEK
	PTST-I-25154	FABRICATION BUSHING, DWG NO 31013-5107, PLAIN CARBON STEEL		200	200	0	on Progress	50	29-Sep	9-Oct	9-Oct	CLADTEK
	PTST-I-25154	FABRICATION WASHER, DWG NO 31013-5108, PLAIN CARBON STEEL		150	150	0	on Progress	5	29-Sep	9-Oct	9-Oct	CLADTEK
	PTST-I-25154	FABRICATION SUPPORT MIDDLE, DWG NO 31013-5109, PLAIN CARBON STEEL		25	25	0	on Progress	50	29-Sep	9-Oct	9-Oct	CLADTEK
	PTST-I-25154	FABRICATION SIDE PLATE, DWG NO 31013-5110, PLAIN CARBON STEEL		100	100	0	on Progress	50	29-Sep	9-Oct	9-Oct	CLADTEK
	PTST-I-25154	FABRICATION WASHER INNER, DWG NO 31013-5111, PLAIN CARBON STEEL		200	200	0	on Progress	100	29-Sep	9-Oct	9-Oct	CLADTEK

Daily Work Progress Update- to Clients

# Best Practices

	<b>FINAL INSPECTION REPORT</b>	Report No. : ST-FMR-0825- Job Card No. : Part No. : Page : 1 of 4
Customer : PT. IEG Description : BRACKET FOR FD-44 LIFETIME LUBRICATED RET. ROLLER Part No. : Dwg No. : FY-916	Location : Shritech Workshop Inspection Date : 18 AGUSTUS 2025 All Dimension : INCH Quantity : 26 PCS	
DRAWING REFERENCE		
		
FORM# OP-05-003 Rev.00 Final Inspection Report		

	<b>CUSTOMER FEEDBACK FORM</b>
---	-------------------------------

Date	
Dear Valued Customer, We are committed to delivering the highest quality of service. Your feedback is essential in helping us improve and serve you even better. Kindly share your comments below, we truly appreciate your time and input.	
Company's Name	
Company's Representative	
Designation	
Contact No	

Please tick accordingly: Excellent (5); Good (4); Average (3); Fair (2); Poor (1)

Customer Service	5	4	3	2	1
a. Ease of contacting company and speed of response to inquiries	<input type="checkbox"/>	<input type="checkbox"/>	<input type="checkbox"/>	<input type="checkbox"/>	<input type="checkbox"/>
b. Clarity and accuracy of information provided by staff	<input type="checkbox"/>	<input type="checkbox"/>	<input type="checkbox"/>	<input type="checkbox"/>	<input type="checkbox"/>
c. Knowledge and technical skills of staff	<input type="checkbox"/>	<input type="checkbox"/>	<input type="checkbox"/>	<input type="checkbox"/>	<input type="checkbox"/>
d. Transparency in communication about service progress or delays	<input type="checkbox"/>	<input type="checkbox"/>	<input type="checkbox"/>	<input type="checkbox"/>	<input type="checkbox"/>
e. Problem-solving ability when unexpected issues arise	<input type="checkbox"/>	<input type="checkbox"/>	<input type="checkbox"/>	<input type="checkbox"/>	<input type="checkbox"/>
Quality of Work	5	4	3	2	1
a. Compliance with agreed specifications or requirements	<input type="checkbox"/>	<input type="checkbox"/>	<input type="checkbox"/>	<input type="checkbox"/>	<input type="checkbox"/>
b. Timeliness of service completion (on-time delivery)	<input type="checkbox"/>	<input type="checkbox"/>	<input type="checkbox"/>	<input type="checkbox"/>	<input type="checkbox"/>
c. Value for money based on service or product quality	<input type="checkbox"/>	<input type="checkbox"/>	<input type="checkbox"/>	<input type="checkbox"/>	<input type="checkbox"/>
d. Action in addressing customer complaint or nonconformance	<input type="checkbox"/>	<input type="checkbox"/>	<input type="checkbox"/>	<input type="checkbox"/>	<input type="checkbox"/>

# Market Analysis

---

## **High Demand for Precision Solutions**

Industries like Oil & Gas, Marine, Aerospace, and Renewable Energy require reliable high-precision components.

## **Rising Need for Onsite Machining**

Clients seek faster turnaround and reduced downtime by avoiding disassembly and transport.

## **Customized Machine Parts**

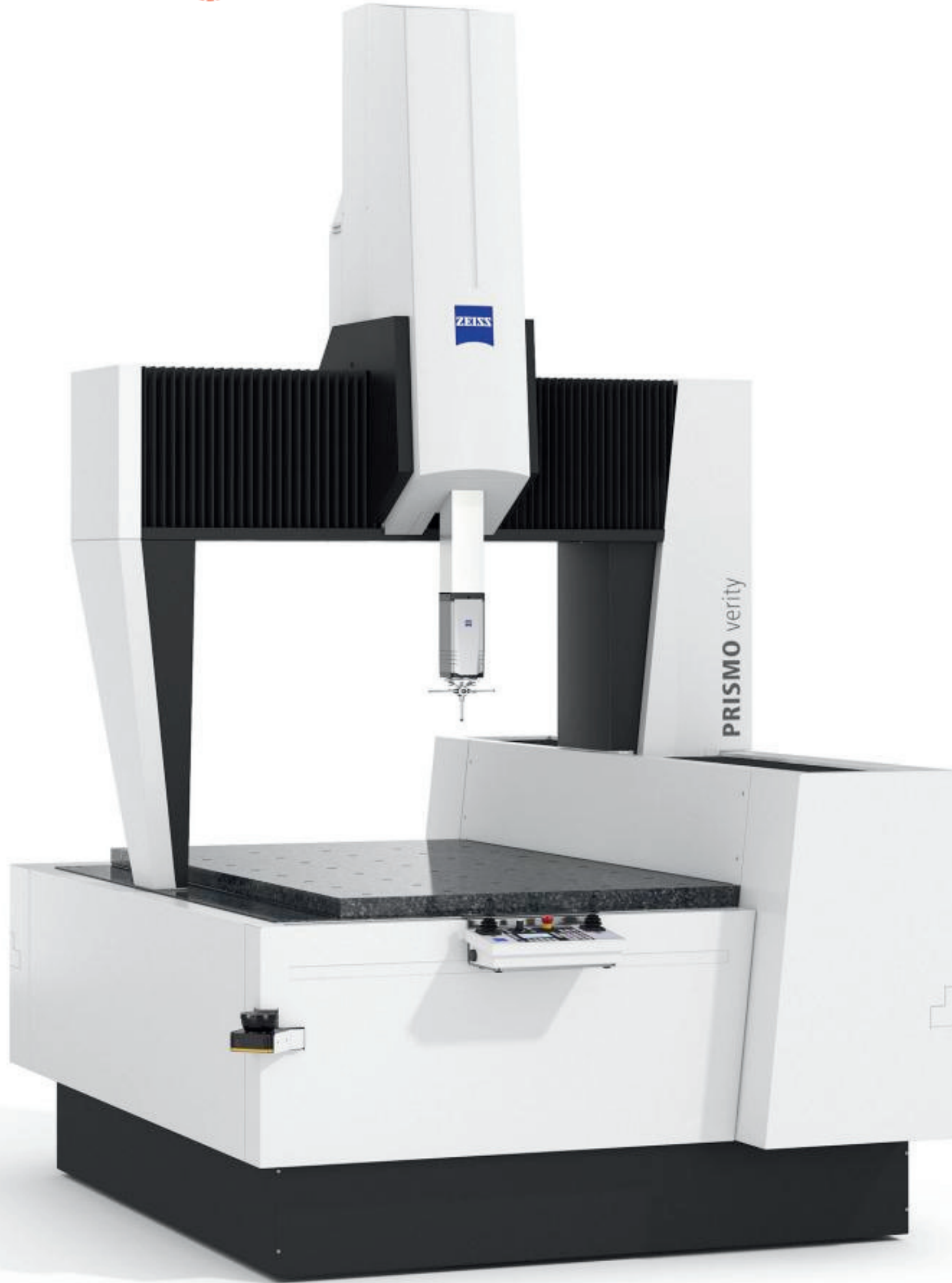
Increasing demand for tailor-made components to meet unique client requirements and tight tolerances.

## **Regional Advantage**

Southeast Asia industries prefer localized machining partners to cut logistics cost and delays.

## **One-Stop Engineering Partner**

Market shift toward suppliers offering CNC machining, fabrication, and onsite services under one roof.



# Client Benefits

- ✓ Cost Efficiency – Precision CNC and fabrication reduce wastage and optimize material usage.
- ✓ High Accuracy & Reliability – Tight tolerances ensure consistent quality for critical components.
- ✓ End-to-End Solutions – One-stop partner for CNC machining, fabrication, and onsite services.
- ✓ Faster Turnaround – Large capacity machines and skilled workforce enable quick project completion
- 
- ✓ Reduced Downtime – Onsite machining solutions minimize equipment disassembly and transport, saving time
- ✓ Strategic Location – Batam & Singapore facilities offer quick response to Southeast Asia and global clients.

# Let's Connect With Us!

---



+62 811 7704 615



ptsales@shritechenergy.com



www.shritechenergy.com.sg



ShriTech Energy Pte Ltd - Singapore  
26 Tuas Avenue 10, Singapore 639147  
Email: sales@stenergy.com.sg



PT. Shritech Energy Indonesia  
Executive Industrial Park, Batam  
Phone: +62 813 64111 945